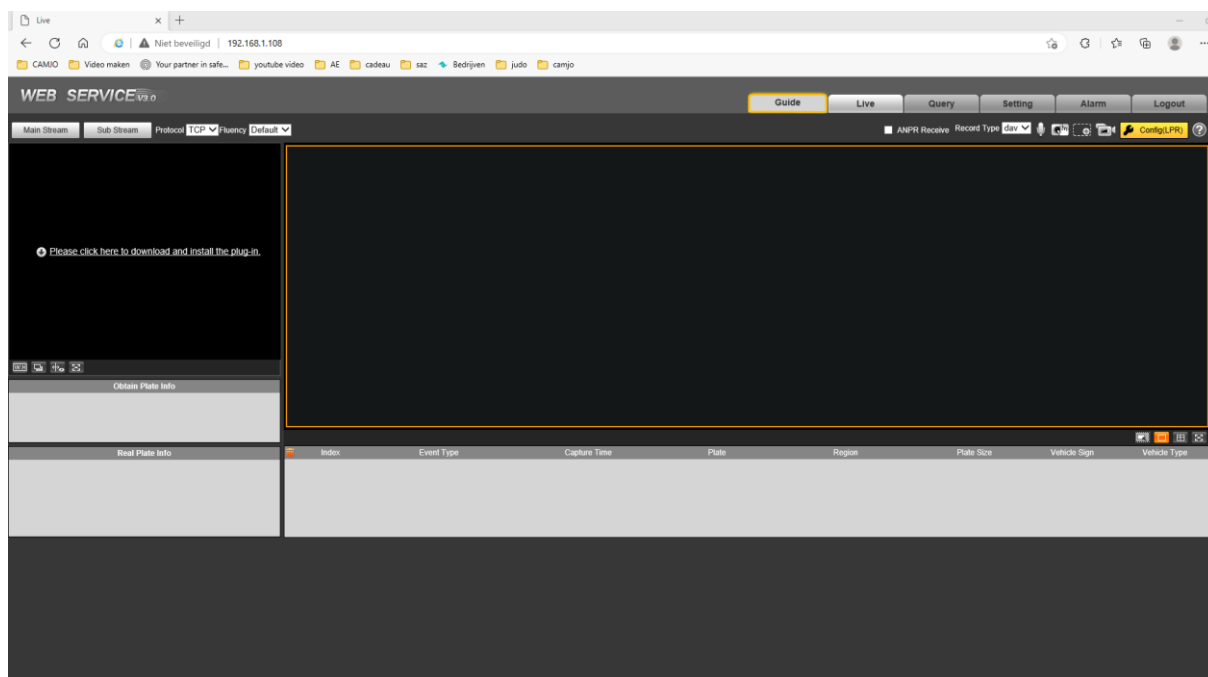
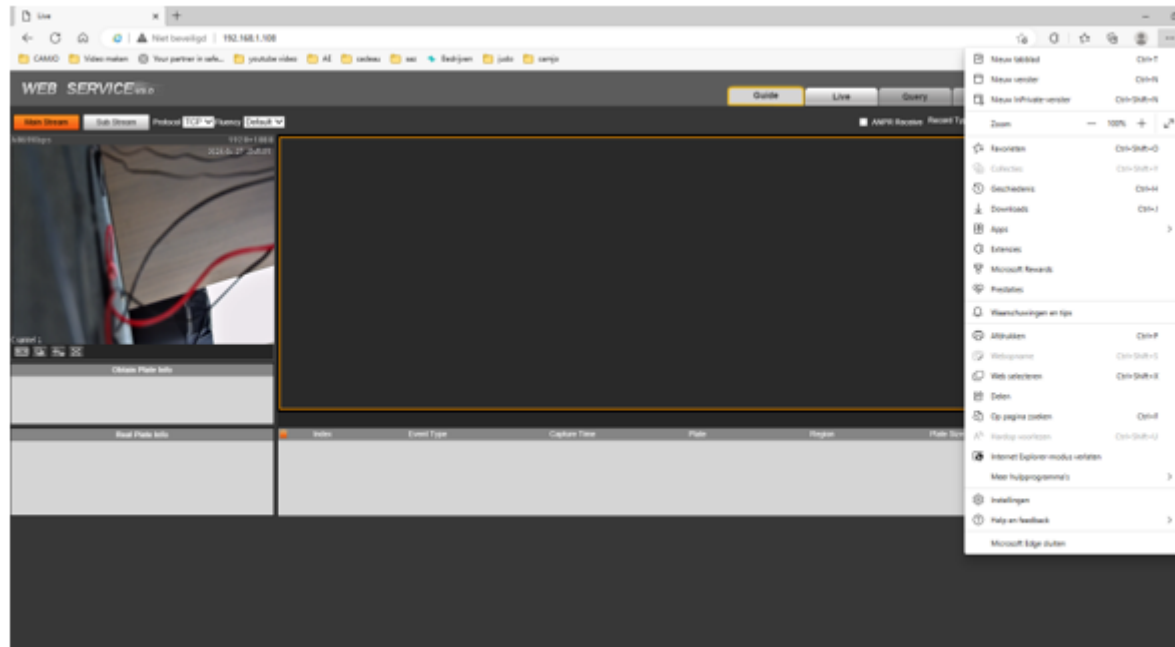


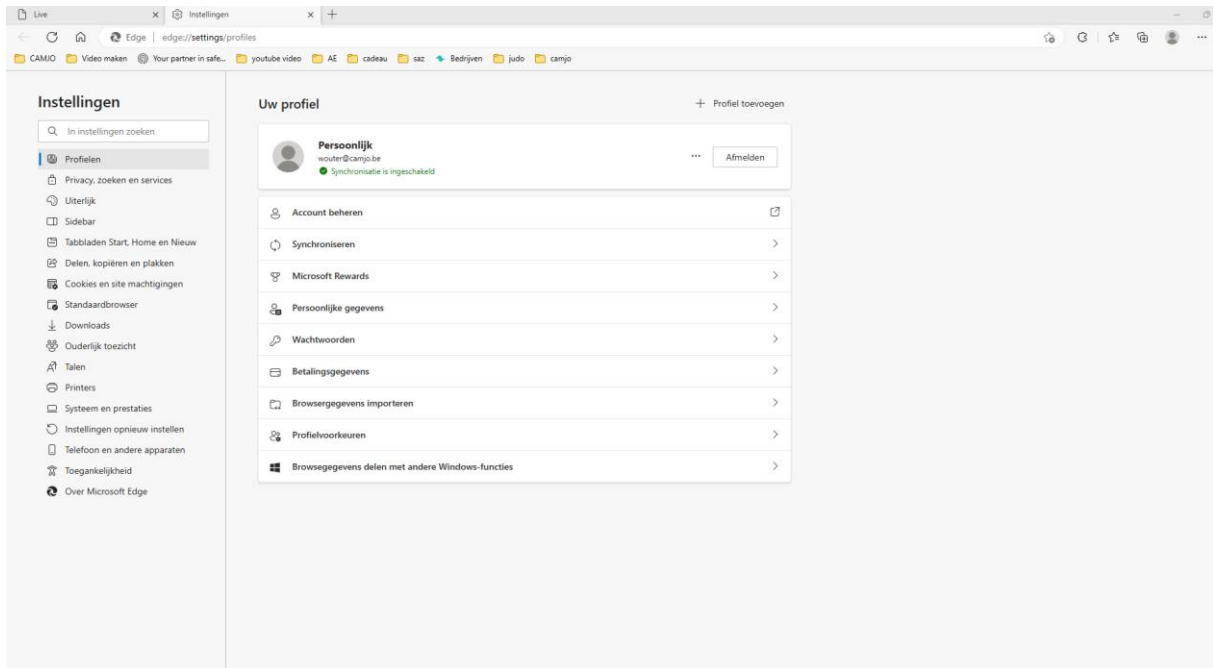
Geen beeld van de camera via microsoft edge :



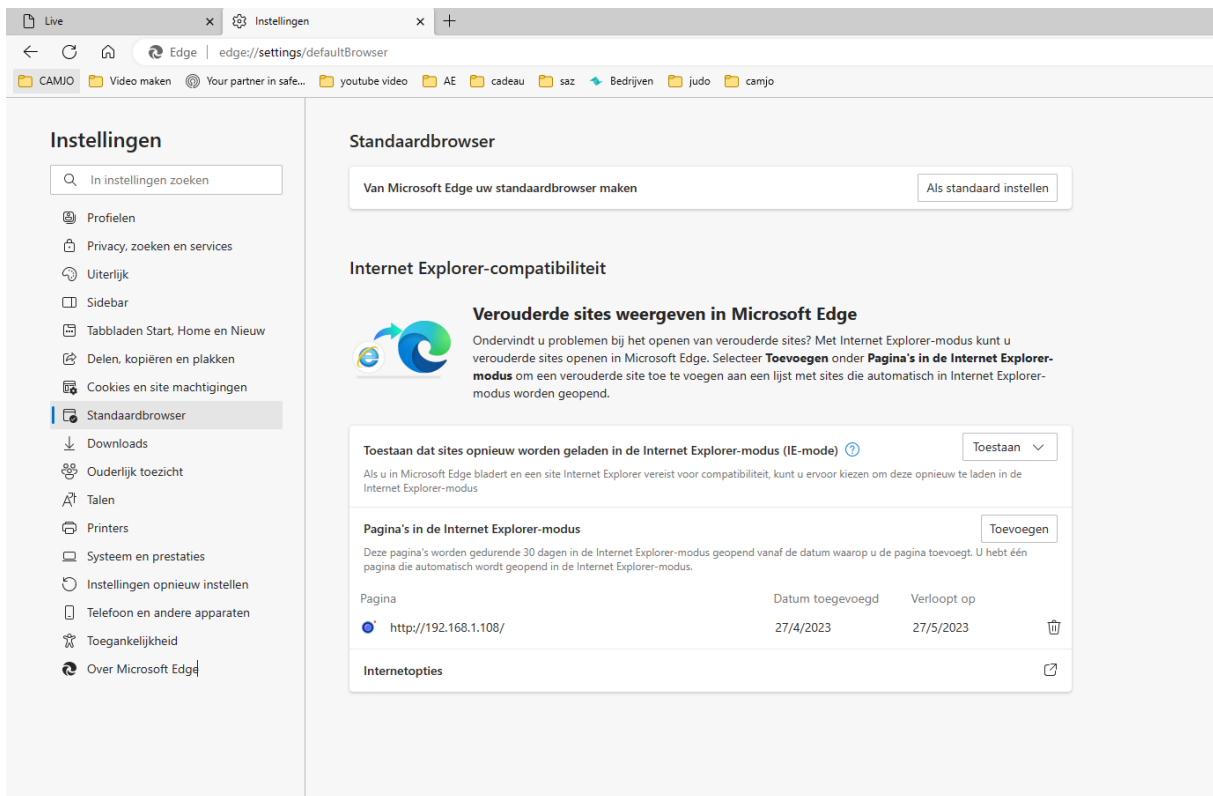
Druk op “...” rechtsboven



Druk op “Instellingen”

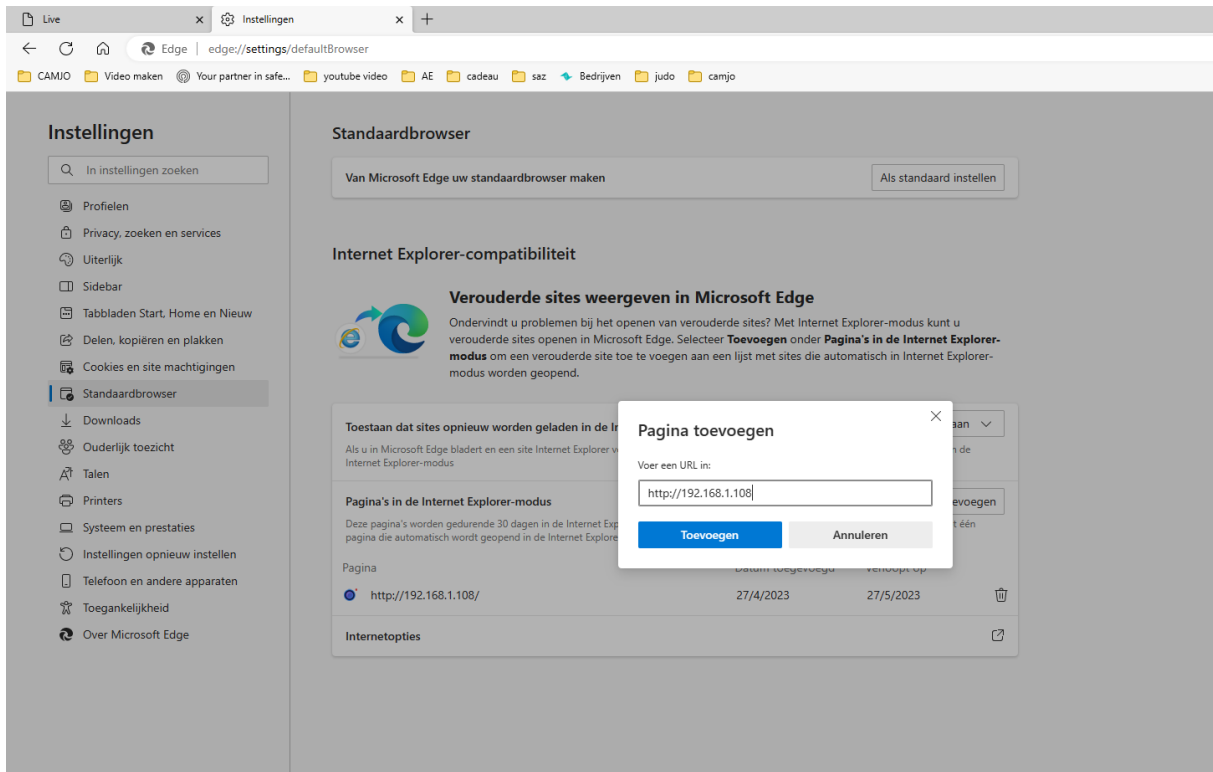


Druk op "Standaardbrowser"



Toestaan dat sites opnieuw worden geladen in de internet Explorer-modus (IE-mode)

Pagina's in de Internet Explorer-modus => Toevoegen



Daarna browser afsluiten en opnieuw opstarten en inloggen in de camera.